

**PUNTUKURNU ABORIGINAL MEDICAL SERVICE
BOARD OF DIRECTORS**

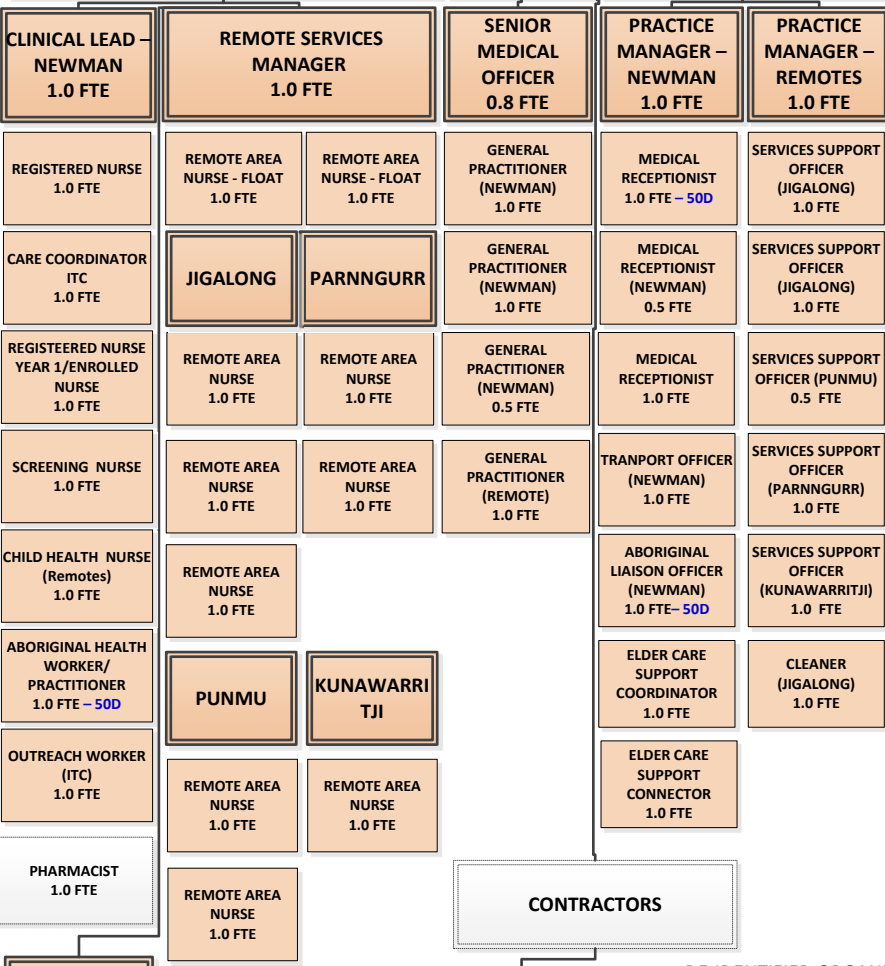
**CHIEF EXECUTIVE OFFICER
1.0 FTE**

EXECUTIVE OFFICER
1.0 FTE

BOARD LIAISON OFFICER
0.2 FTE

DIRECTOR OF CLINICAL SERVICES

CLINICAL TEAMS **DOCTORS** **PRACTICE & SERVICE COORDINATION**



CONTRACTORS

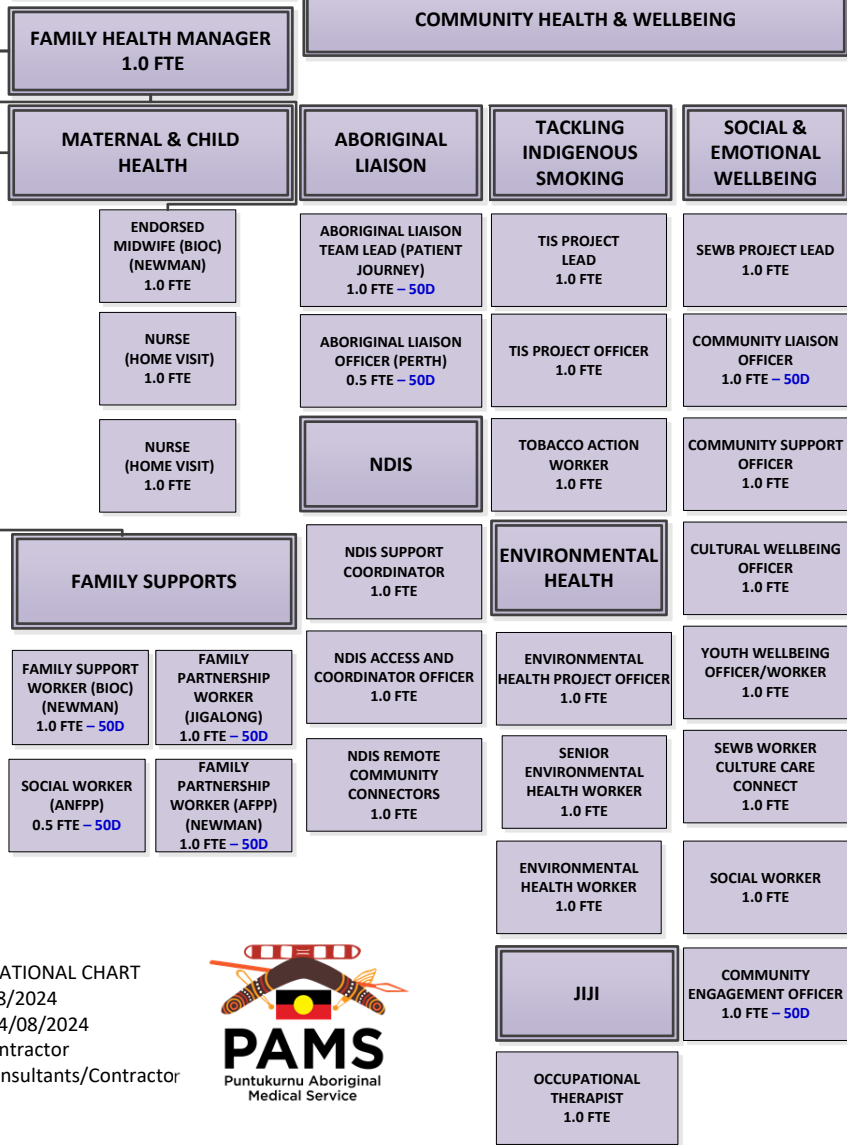
RENAL SERVICES
3.0 FTE

DIRECTOR OF COMMUNITY HEALTH

FAMILY HEALTH & WELLBEING

**FAMILY HEALTH MANAGER
1.0 FTE**

COMMUNITY HEALTH & WELLBEING



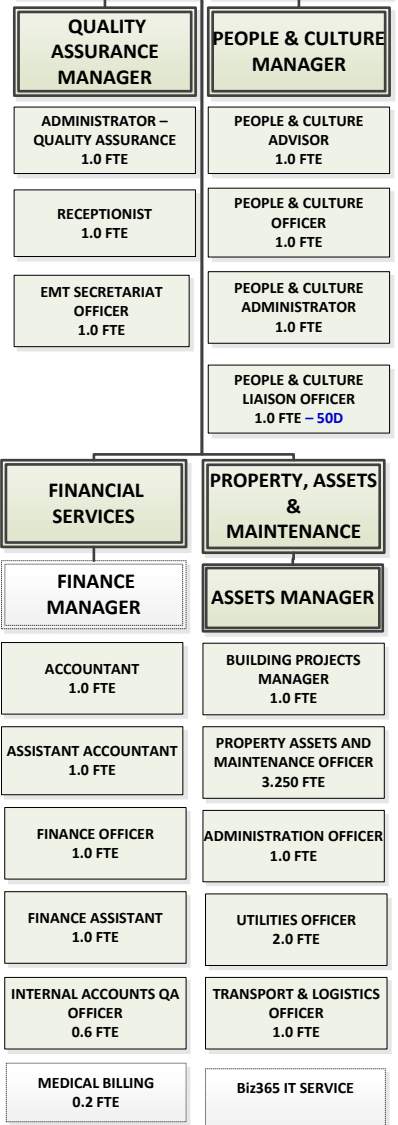
DIRECTOR OF CORPORATE SERVICES

QUALITY ASSURANCE

QUALITY ASSURANCE MANAGER

PEOPLE & CULTURE

PEOPLE & CULTURE MANAGER



DE-IDENTIFIED ORGANISATIONAL CHART
Updated: 12/08/2024
Board Endorsed: 14/08/2024
Blue Position Contractor
White Positions – External Consultants/Contractor

